



Sika Solutions for Facades

80 London Landmarks with Sika Inside



Innovation & Consistency | since 1910



Sika Façade Systems in London

Sika's façade products have a long history in London. Sikaflex® Polyurethane and SikaMembran® EPDM sheet membranes have been well established in the UK façade market. Nevertheless before 2004 Sika did not play an important role in structural glazing façades. This changed when Sika acquired the engineering silicone business from Wacker-Chemie GmbH in 2004. Wacker's structural glazing adhesive Elastosil® SG-500 had already been used for more than 10 years by the renowned curtain wall fabricators Josef Gartner and Schmidlin AG. Sika then composed a unique product portfolio around the silicone products, and renamed Elastosil® into Sikasil®. This comprehensive product range together with the competent technical service in the Sika Façade Competence Centre in Switzerland and the strong on-site service in UK made Sika THE partner for sealing, bonding and water-proofing in London's glass façades.

Sika's London Landmarks

No	Project Name	Applications
1	Chiswick Park Building 8-9	SG, WS
2	Merchant Square Carmine, North Wharf Road	SG, WS
3	Merchant Square West End Reach, Harbet Road	SG, WS
4	The Point Paddington, Paddington Station	MB
5	Heathrow Airport T4	SG, WS, MB
6	Heathrow Airport T5	SG, WS, MB
7	Heathrow Airport T2 B	SG, WS
8	Darwin Centre, Exhibition Road, Kensington	SG, WS, IG
9	Victoria & Albert Museum, Cromwell Road	SG
10	Threshold Residence, Parsons Green	TP
11	Montevetro, 112 Battersea Church Road	MB
12	New Wembley Stadium, Empire Way	SG, WS
13	199 Knightsbridge	MB
14	Wandsworth Southside	SG, WS
15	Berkeley Hotel, Knightsbridge	WS
16	70 Brompton Road	SG, WS, IG
17	One Hyde Park, Knightsbridge	SG, WS
18	York House, Great Cumberlandplace	SG, WS, FS, SF
19	Park House, 116 Park Street	SG, WS
20	55 Baker Street	SG, WS, IG
21	Regent's Place West Quarter, 1 Osnaburgh Street	SG
22	Regent's Place West Quarter, 1 Great Portland Square	WS, NS
23	BBC Sculpture, Portland Place, Langham Street	SG, WS
24	Asprey Store, 167 New Bond Street	SG
25	Cardinal Place, 80-100 Victoria Street	SG, WS
26	Belgrave House, 76 Buckingham Palace Road	SG, WS, MB
27	University College London Hospitals, Euston Road	MB
28	Arup Phase III, 8 Fitzroy Street	SG, WS
29	Gresse Street	SG, WS, MB
30	Quadrant 3, Regent Street	MB
31	The Angel Building, St Johns Rd/Pentonville Rd	SG, WS
32	New Street Square, New Fetter Lane	SG, WS, IG
33	40 Holborn Viaduct	SG
34	Holborn Place, 33 Holborn Circus	MB
35	Ludgate West, 14 Farringdon Street	SG
36	Tudor Street, 1 Tudor Street	SG, WS, MB
37	Westminster Bridge Park Plaza	SG, WS
38	One London Wall	SG, WS
39	150 Cheapside	SG, WS
40	One New Change, 1 New Change	SG, WS, IG, MB
41	Bow Bells House, 1 Bread Street	SG, WS, FS

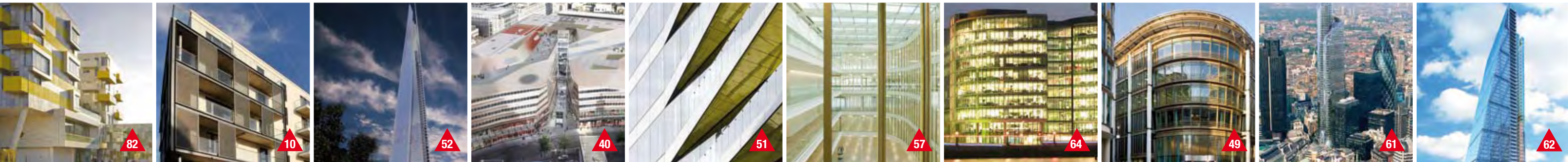
No	Project Name	Applications
42	Tate Modern, Bankside	MB
43	1 Wood Street	SG, WS, FS
44	10 Gresham Street	WS
45	107 Cheapside	SG, WS, IG
46	Cannon Place, Cannon Street	SG, WS
47	Watermark Place, Upper Thames Street	SG, WS, MB, GG
48	5 Aldermanbury Square	SG, WS, MB
49	20 Gresham Street	SG, WS, MB, GG
50	The Walbrook, Cannon Street	SG, WS
51	Riverbank House, 2 Swane Lane	SG, WS, MB, GG, SF
52	The Shard, 32 London Bridge Street	SG, WS, IG
53	Moorhouse, Moor Gate	WS
54	One Basinghall Avenue	WS, FS, SF
55	One Lothbury, 1 Lothbury	SG
56	Drapers Gardens, 12 Throgmorton Avenue	SG, WS, FS, MB, SF
57	60 Threadneedle Street	SG, WS, MB, GG, SF
58	Bezier Building, 81 City Road	WS
59	30 Finsbury Square	SG, WS
60	Dashwood House, 69 Old Broad Street	SG, WS, MB
61	The Pinnacle, Crosby Court, 22-24 Bishopsgate	SG, WS, MB
62	122 Leadenhall Street	SG, WS, MB
63	Willis Building, 51 Lime Street	SG, WS
64	More London Building 1A, 1 More London Place	GG
65	The Tower, Tabard Square	SG
66	Broadgate Tower, 201 Bishopsgate	SG, WS, MB
67	201 Bishopsgate	SG, WS, MB
68	Eden House, 5-13 Spital Square	SG, WS, MB
69	Nido Spitalfields, Middlesex Street	SG, WS
70	Heron Tower, 106-126 Bishopsgate	SG, WS
71	St Botolph's House, 138-139 Houndsditch	SG, WS, IG
72	30 St Mary Axe, (Swiss Re)	SG, MB, SF
73	City Hall (GLA), The Queen's Walk	MB
74	Tower Bridge House, K2, St. Katharine's Way	SG, WS, MB
75	Olympic Velodrom, Olympic Park	IG
76	Royal London Hospital, Whitechapel Road	SG, WS
77	BP 3, 20 Churchill Place, Canary Wharf	SG, WS
78	DS3 West KPMG, 15 Canada Square	SG, WS
79	Riverside South, Westferry Circus, Canary Wharf	SG, WS
80	The Landmark, 22 Marsh Wall	SG, WS, IG
81	35 Millharbour	SG, WS
82	Lifelong Learning Centre, Barking	TP

Applications and Sika Products in Project List

SG	Structural glazing	Sikasil® SG-500
WS	Weather sealing	Sikasil® WS-605 S
NS	Natural stone sealing	Sikasil® WS-355
FS	Fire-retardant sealing	Sikasil® FS-665, Sikasil® FS-665 SL
MB	Water- /vapour-proofing	SikaMembran® System

IG	Insulating glass edge sealing	Sikasil® IG-25 HM Plus, SikaGlaze® IG-5 PIB
GG	Glass wall grouting	SikaForce® 7710, Sika® Icosit® KC340/7
TP	Elastic panel bonding	SikaTack® Panel System
SF	Joint sealing of concrete	Sikaflex® PU sealant and Sikaflex® AT PU-Hybrid





London's Innovative Architecture: THE Play Ground for the most Renowned Architects

Architect	Project	Homepage
Alford Hall Monaghan Morris	31, 82	www.ahmm.co.uk
Atelier Jean Nouvel	40	www.jeannouvel.com
EPR Architects	18, 25	www.epr.co.uk
Fletcher Priest Architects	43, 46, 47, 55, 60	www.fletcherpriest.com
Foster & Partners	24, 34, 38, 44, 50, 53, 63, 64, 72, 73	www.fosterandpartners.com
HOK	41, 76	www.hok.com
Herzog & De Meuron	42	info@herzogdemeuron.ch
KPF	49, 61, 70, 77, 78	www.kpf.com
Nicolas Grimshaw Architects	71	www.grimshaw-architects.com
Renzo Piano	52	www.rpbw.r.ui-pro.com
Rogers Stirk Harbour + Partner	1, 6, 11, 12, 15, 17, 62, 74, 79	www.richardrogers.co.uk
SOM	35, 66, 67	www.som.com
Squire and Partners	13, 80	www.squireandpartners.com
Terry Farrell & Partners	4, 21, 22	www.terryfarrell.co.uk
TP Bennett Architects	36, 58, 69	www.tpbennett.com

International Facade Manufacturers Build London's Landmarks with Sika Facade Products

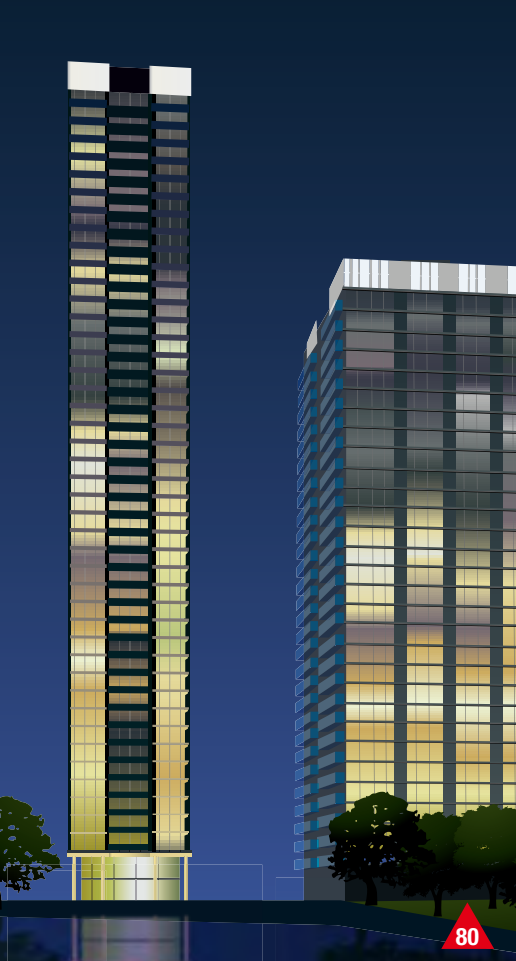
Contractor	Project	Homepage
Bellapart (ES)	15	www.bellapart.com
Cladding UK (UK)	10, 82	www.claddinguk.co.uk
Euroview Manufacturing (UK)	75	www.mylocalservices.co.uk
Fahrni (CH)	27, 29, 36, 60, 68	www.fahrni.com
Félix constructions (CH)	4, 11, 13, 30, 34, 35, 42	www.felix-constructions.ch
Focchi (IT)	16, 19, 20, 22, 45	www.focchi.it
Josef Gartner (DE)	1, 18, 25, 38, 40, 41, 43, 44, 46, 47, 49, 50, 51, 54, 56, 57, 61, 62, 66, 67	www.josef-gartner.de
Lindner Schmidlin (DE)	6, 48	www.lindner-group.com
Mero Schmidlin (DE)	63	www.merouk.co.uk
Octatube (NL)	9	www.octatube.nl
Oskomera (NL)	21, 55, 65	www.oskomera.nl
Permasteelisa UK (UK)	7, 8, 32, 53, 64, 69, 71, 78, 79	www.permasteelisa.co.uk
Rinaldi-Structural (FR)	28	www.rinaldi-structural.com
Scheldebouw (NL)	2, 3, 12, 17, 31, 33, 39, 52, 70, 76, 77	www.permasteelisa.nl
Schmidlin AG (CH)	5, 26, 59, 72, 73, 74	www.schmidlin-tsk.com
Tuchschmid (CH)	23	www.tuchschmid.ch
Waagner-Biro (AT)	24	www.waagner-biro.at
YuanDa (CN)	14, 37, 58, 80, 81	www.yuanda.com.cn

Sources of Photographs and Drawings

Brian Gough (10), Cesar Serrano (67,66), Felix constructions (4, 11), Gartner (40), Holger Knauf (49, 57), Nick Cooney (23), Sandra Weisshaupt (London map and drawings no. 52, 61, 62, 74, 80), Scheldebouw (76), Schmidlin (48, 63), Timothy Soar (51, 82), Tristram Compton (64, 27)







80



67

66



70

Facades Bonding and Sealing with Sikasil® SG and WS

Project Requirements

In structural sealant glazing UV and weathering resistant silicone adhesives and compatible weather sealants are state of the art technologies. The world's leading curtain wall fabricators requested the most durable and reliable products.

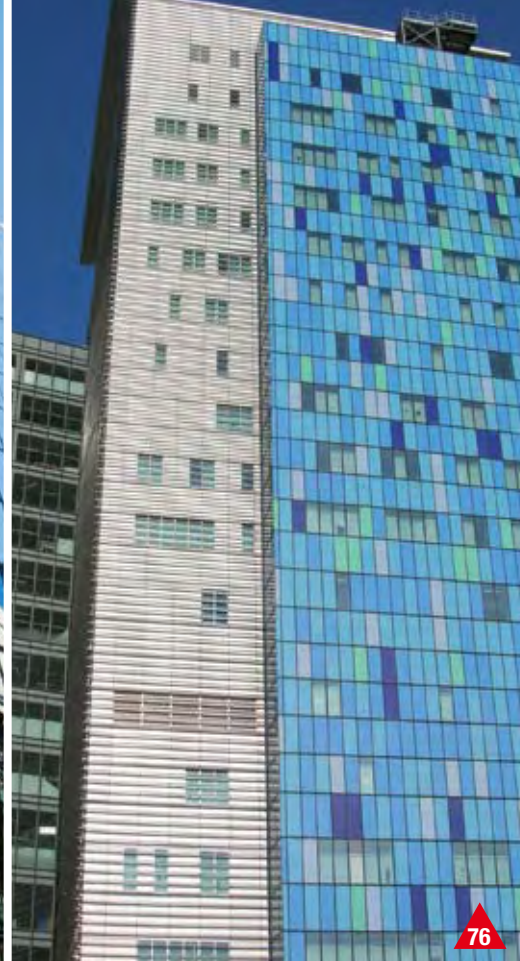
Sika Solution

Sika FFI Competence Centre in Switzerland has tested the adhesion and compatibility of Sikasil® SG-500 (complying with ETAG 002) and Sikasil® WS-605 S (classified ISO 11600 F&G 25 LM) with all materials in contact with the silicones prior to any application in these high rise buildings. For perfect compatibility Sika even provides the Sika® Spacer Tape HD.





63



76



23

80 The Landmark E14 (22 Marsh Wall)

Project Participants
Architect: Squire and Partners
Facade: Shenyang YuanDa (2009)

66 Broadgate Tower,

67 201 Bishopsgate

Project Participants
Architect: Skidmore, Owings & Merrill
Facade: Josef Gartner (2008)

70 Heron Tower

Project Participants
Architect: Kohn, Pederson, Fox
Facade: Scheldebouw (2010)

63 Willis Building

Project Participants
Architect: Foster and Partners
Facade: Mero-Schmidlin UK (2008)

76 Royal London Hospital

Project Participants
Architect: HOK
Facade: Scheldebouw (2009)

23 BBC Sculpture

Project Description
The light sculpture on top of the new wing of the BBC Broadcasting House building, was inaugurated on June 18, 2008 by Secretary-General of the United Nations, Ban Ki-moon, and is dedicated to the memory of journalists killed in the line of work.

Project Requirements
The construction requested a durable, high-strength adhesive for the safe bonding of the curved glass elements onto the steel skeleton.

Sika Solution
Sikasil® SG-500 structural glazing adhesive

Project Participants
Design: Jaume Plensa
Engineering: Rambol Whitbybird
Construction: Tuchschnid (2008)



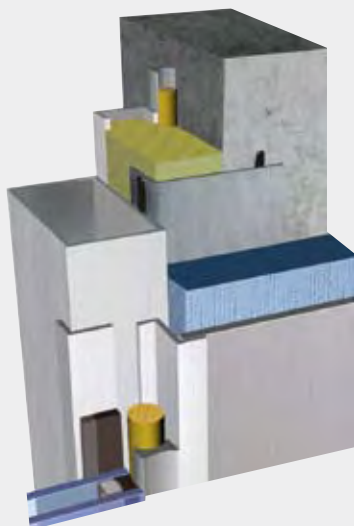
Vapour Proofing with SikaMembran® System

Project Requirements

The 4 projects on this page either have a very fragmented facade with protrusions or connections between facades where joint sealing with wet sealants is not possible and wide gaps have to be water-/vapour-proof.

Sika Solution

The SikaMembran® system consists of a set of EPDM membranes and an adhesive suitable for a durable water-/vapour-proofing in each climate and on many various substrates. The easy and fast application of the thin sheet membranes is outstanding.



13 199 Knightsbridge

Project Participants
Architect: Squire and Partners
Facade: Felix constructions (2006)

11 Montevetro

Project Participants
Architect: Rogers Stirk Harbour + Partner
Facade: Felix constructions (2000)

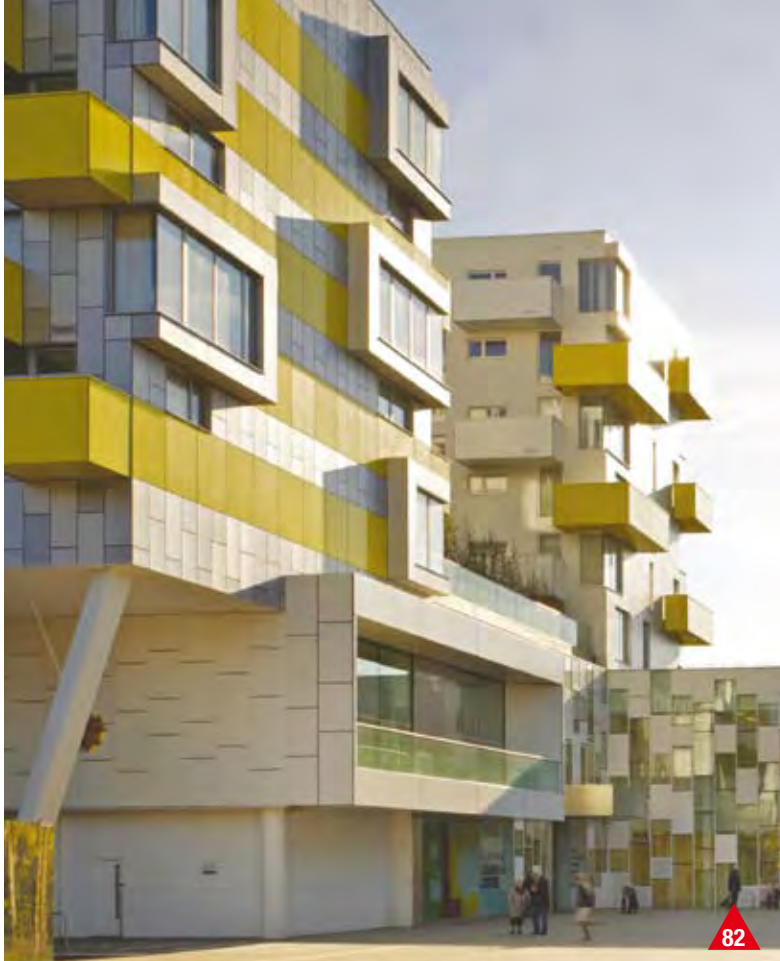
48 5 Aldermanbury Square

Project Participants
Architect: Eric Parry Architects
Facade: Lindner-Schmidlin UK (2005)

27 University College London Hospitals; UCLH

Project Participants
Architect: Llewelyn Davies Yeang Architects
Facade: Fahrni AG (2005)





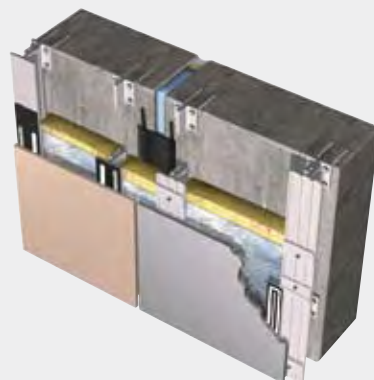
Facade Cladding with SikaTack® Panel System

Project Requirements

For these projects, the contractors required a striking white all over aesthetic with flawless facade without a single fastener to diminish the appearance.

Sika Solution

SikaTack® Panel elastic bonding technology requires no screws or brackets and grants a timesaving application. Temporarily held in place using special double-sided adhesive tape, SikaTack® Panel adhesive bonds the panel firmly but stress free to the carrier frame (no buckling). Vapour proofing of the ventilated facade ideally is done with SikaMembran® system.



82 Lifelong Learning Centre Barking

Project Participants
Architect: Allford Hall Monaghan Morris
Facade: Cladding UK

10 Threshold Residence, Parsons Green

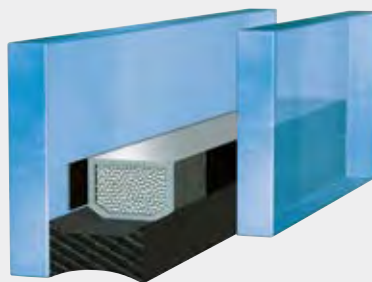
Project Participants
Client: Threshold Housing Association
Facade: Cladding UK



Argon-filled Insulating Glass with Sikasil® IG-25 HM Plus

Project Requirements

In high-performance energy-saving glass facades the insulating glass units must be Argon-filled. So far this was a domain of capped curtain wall systems and standard windows with PU and PS secondary sealants, because for structural sealant glazing only silicone sealants are approved. But silicones were regarded as not suitable for Argon-filled IG units.



Sika Solution

With the development of the high-modulus silicone secondary sealant Sikasil® IG-25 HM Plus Argon loss rates as low as 0.5% per year are achievable, resulting in a service life of the IG unit of at least 30 years. For the projects above Sikasil® SG, IG, WS and even Sika® Spacer Tape HD in a particular shade of grey have been created to meet the architect's expectations.

40 One New Change

Project Participants

Architect: Ateliers Jean Nouvel
 Insulating Glass: Bischof Glas BGT, DE
 Facade: Josef Gartner (2010)

52 The Shard (London Bridge Tower)

Project Participants

Architect: Renzo Piano
 Insulating Glass: Flachglas Wernberg, DE
 Facade: Scheldebouw (2012)

For drawing please see page 14



51



64



57



49

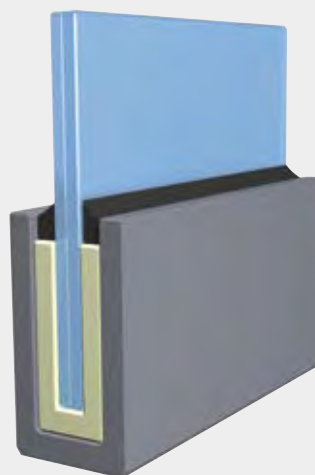
Glass Wall Grouting with Sika® Icosit® and SikaForce®

Project Requirements

Glass balustrades should be fixed to the floor with the lowest stress possible on the glass pane. But mechanical fasteners transfer high punctual stress to the glass. Thicker glass panels are the consequence.

Sika Solution

The bottom glass edge is embedded in the floor with self-levelling, high-strength fast-curing 2-part PU system SikaForce® 7710 or Sika® Icosit® KC 340/7, resulting in uniform stress distribution and thus reduction of high punctual stress. In out-door applications a bead of Sikasil® WS-605 S protects the PU against UV radiation.



51 Riverbank House

Project Participants
 Architect: David Walker Architects
 Facade: Josef Gartner (2011)

57 60 Threadneedle Street

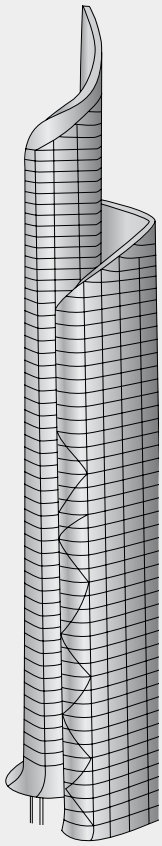
Project Participants
 Architect: Fletcher Priest Architects
 Facade: Josef Gartner (2007)

64 More London Building 1A

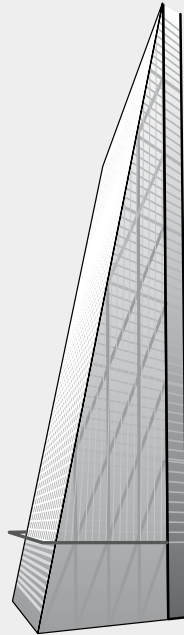
Project Participants
 Architect: Foster and Partners
 Facade: Permasteelisa UK (2003)

49 20 Gresham Street

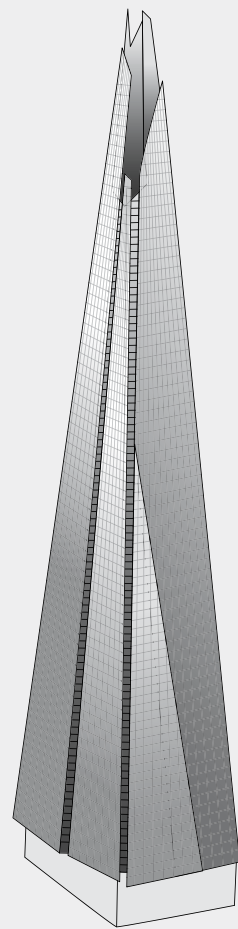
Project Participants
 Architect: Kohn, Pederson, Fox
 Facade: Josef Gartner (2008)



61



62



52

On the Drawing Boards

61 The Pinnacle

Project Participants

Architect: Kohn, Pederson, Fox

Facade: Josef Gartner (2011)

62 122 Leadenhall Street

Project Participants

Architect: Rogers Stirk Harbour + Partner

Facade: Josef Gartner (2011)

52 The Shard (London Bridge Tower)

Project Participants

Architect: Renzo Piano

Insulating Glass: Flachglas Wernberg, DE

Facade: Scheldebouw (2012)

Sika Worldwide



Sika is a globally active company supplying the specialty chemicals markets. It is a leader in processing materials used in sealing, bonding, damping, reinforcing and protecting load-bearing structures in construction (buildings and infrastructure construction) and in industry (vehicle, building component and equipment production).

Sika's product lines feature high-quality concrete admixtures, specialty mortars, sealants and adhesives, damping and reinforcing materials, structural strengthening systems, industrial flooring and membranes. Subsidiaries in more than 70 countries worldwide and approximately 12,900 employees link customers directly to Sika.

Technical Service

Sika Services AG
FFI Competence Centre
Tüffenwies 16
CH-8048 Zürich
Phone +41 58 436 52 87
Fax +41 58 436 54 07
ch-fcc@ch.sika.com

Customer Service

Sika Engineering Silicones Srl.
Via L. Einaudi, 6
I-20068 Peschiera Borromeo (MI)
Phone +39 02 516591 205
Fax +39 02 516591 298
it-ses-admin@it.sika.com



Browse our buildings at www.emporis.com



© Sika Services AG / 06.2010 / CMS / RB



Our most current General Sales Conditions shall apply.
Please consult the Product Data Sheet prior to any use.

www.sika.com

Innovation & Consistency | since 1910